

SUMMER CREEK

162

BEING A PORTION OF GOLDEN LAKES VILLAGE, P.U.D.
 IN SECTIONS 29 & 32, TOWNSHIP 43 SOUTH, RANGE 42 EAST
 BEING A REPLAT OF PORTIONS OF TRACTS 9,10,11 & 18 BLOCK 3,
 PALM BEACH FARMS COMPANY PLAT No.3 (PLAT BOOK 2, PAGES 45-54)
 PALM BEACH COUNTY, FLORIDA.

SHEET 3 OF 5

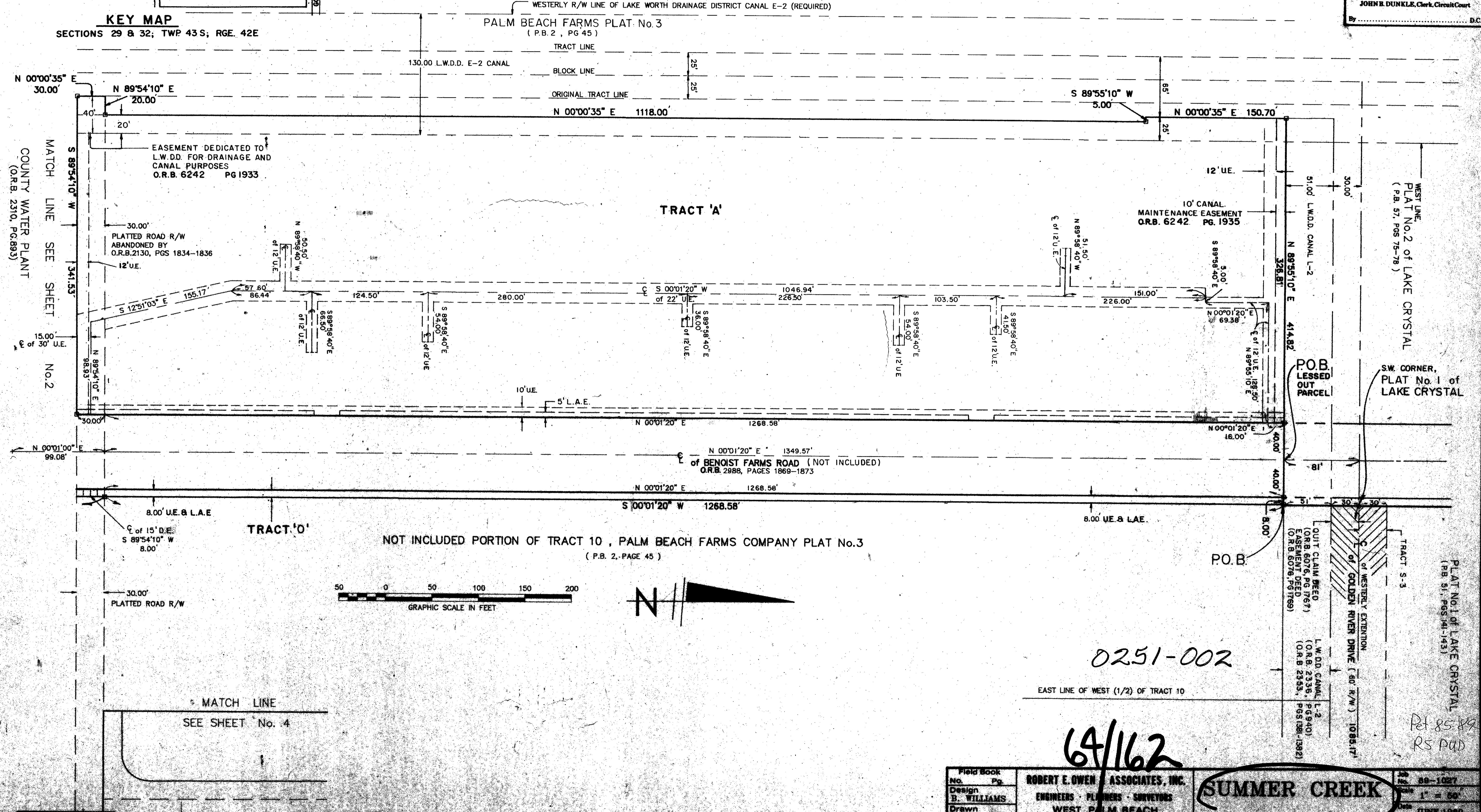
JUNE, 1989

COUNTY OF PALM BEACH
 STATE OF FLORIDA
 This Plat was filed for record at M.
 this day of
 19 and duly recorded in Plat Book No.
 on page
 JOHN B. DUNKLE, Clerk, Circuit Court
 By

KEY MAP

SECTIONS 29 & 32; TWP 43 S; RGE. 42 E

PALM BEACH FARMS PLAT No. 3
 (P.B. 2, PG 45)



0251-002

64/162

Field Book No. Pg	ROBERT E. OWEN ASSOCIATES, INC.	89-1027
Design B. WILLIAMS	ENGINEERS PLANNERS SURVEYORS	1" = 50'
Drawn B. WILLIAMS	WEST PALM BEACH FLORIDA	JUNE, 1989
Checked H. WILKINS		53
		BT 2441

DIVISION OF SUMMER CREEK
 3000 S.W.
 FLOOD ZONING (7) FLOOD MAP #150A
 11/18 # 46
 85-89
 PUP NAME GOLDEN LAKES VILLAGE, P.U.D.

T&Z 818